

Steps to shut down your WMF coffee equipment for a period time:

1. Turn off the power whilst you perform the next step
2. Starting from the top empty out the bean containers, either using the supplied multitool and removing the hopper or by scooping out the beans using a small scoop/cup to remove the beans out directly from the hopper



3. Turn the power back on and then run off at least 3 x espresso's until machine informs you it is out of beans and then the grinder completely, to ensure the grinders are fully empty. If you have a second hopper do exactly the same by using the black coffee
4. Follow the user manual in cleaning the machine perform a full system clean



5. Isolate the power and water supply if your machine is working with a cooler please isolate the power to this equipment as well
6. Remove the grouts container clean wipe out and dry fully then place back into the machine

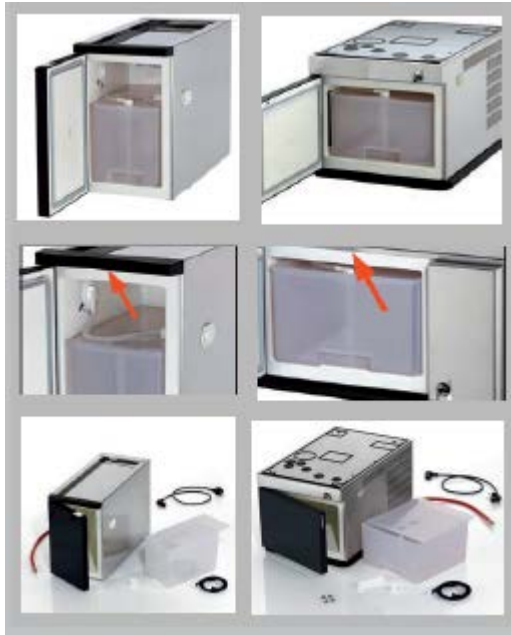


7. Remove drip tray and grill wash wipe down clean and dry
8. Clean the surrounding area that is visible from the tray removed.
9. Reinsert the drip tray

10. If your machine is one of the following: 1100S, 1200S, 1200f, Presto!, 1500S/+, 2000S please remove the brewer unit as per the user manual and clean/dry fully and re insert.



11. If your machine has a removable foamer head (refer to your user manual) please remove this and deep clean
12. If your machine has the chocolate/powder option (refer to your user manual) please remove this and deep clean
13. Open cooler/fridge remove the milk container dispose of the milk
14. Wash thoroughly the milk container and milk container lid along with the Plug 'N' clean adaptor.



15. Fully dry the milk container and milk container lid
16. With the milk container removed wash clean/wipe out the inside of the cooler (defrost if necessary)
17. Fully dry the inside of the cooler and door area
18. Wipe down the complete outside surfaces of the machine and cooler by using the agreed store method (cleaner material locally advised)